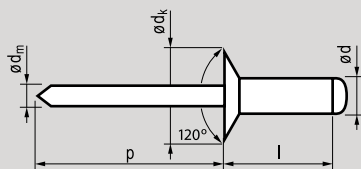
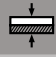
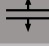
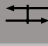






 **Steel**
Zinc plated

 **Steel**
Zinc plated



open type I countersunk head

$\varnothing d$	l [+1/-0,2]		Item nr.	$\varnothing d_k$	k	$\varnothing d_m$	p		
[mm]	[mm]	[mm]		[mm]	[mm]	[mm]	[mm]	[N]	[N]
3,0	6,0	1,5-3,0	10443006						
[+0,08/-0,10]	8,0	3,0-5,0	3008	6,0	-	~1,90	≥27	1.125	915
	10,0	5,0-7,0	3010	[+0/-0,4]					
Ø 3,1	12,0	7,0-9,0	3012						
3,2	6,0	1,5-3,0	10443206						
[+0,08/-0,10]	8,0	3,0-5,0	3208	6,0	-	~2,00	≥27	1.285	1.060
	10,0	5,0-7,0	3210	[+0/-0,4]					
Ø 3,3	12,0	7,0-9,0	3212						
4,0	6,0	1,5-2,5	10444006						
[+0,08/-0,15]	8,0	2,5-4,5	4008	7,5	-	~2,50	≥27	1.990	1.550
	10,0	4,5-6,5	4010	[+0/-0,5]					
Ø 4,1	12,0	6,5-8,5	4012						
	14,0	8,5-10,5	4014						
	16,0	10,5-12,5	4016						
4,8	8,0	2,5-4,5	10444808						
[+0,08/-0,15]	10,0	4,5-6,0	4810	9,0	-	~2,90	≥27	2.920	2.300
	12,0	6,0-8,0	4812	[+0/-0,5]					
Ø 4,9	14,0	8,0-10,0	4814						
	16,0	10,0-11,5	4816						
	18,0	11,5-13,5	4818						
	20,0	13,5-15,5	4820						